

Supplement of Primate Biol., 8, 19–35, 2021
<https://doi.org/10.5194/pb-8-19-2021-supplement>
© Author(s) 2021. CC BY 4.0 License.



Primate
Biology  Open Access

Supplement of

Comparative ecology of Guinea baboons (*Papio papio*)

Dietmar Zinner et al.

Correspondence to: Dietmar Zinner (dzinner@gwdg.de, dzinner@dpz.eu)

The copyright of individual parts of the supplement might differ from the article licence.

Supplement

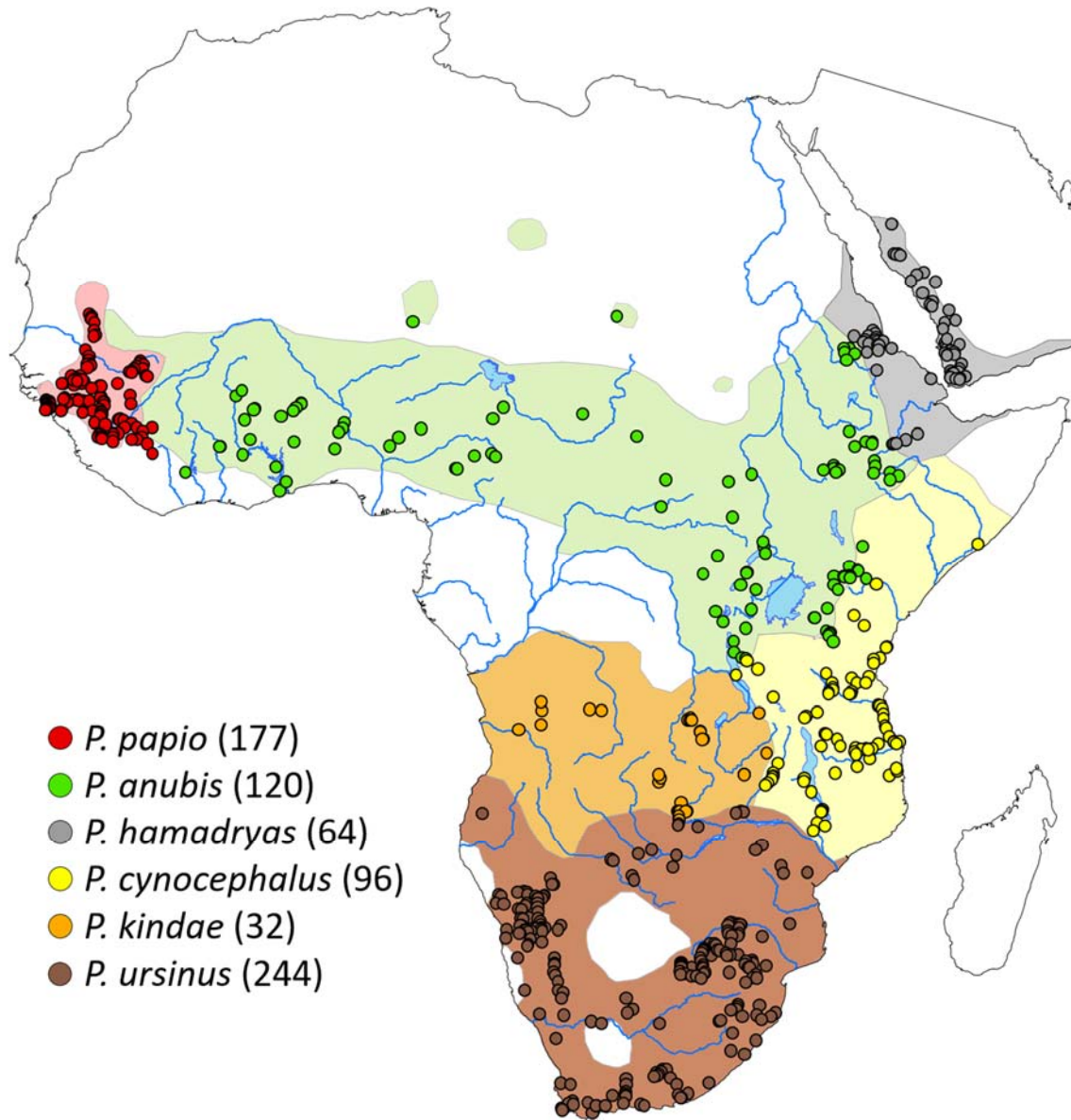


Figure S1: Approximate distribution of the six baboon (*Papio*) species and geographic positions of occurrence points (redrawn from Chala et al. 2019).

5 **Table S1:** Chemical components of food items consumed by *Papio papio* at Simenti collected during the wet and the dry season. Values are percentages of dry weight, except for alkaloids that have been analysed only qualitatively; pos = positive, neg = negative.

Species	Family	Plant Item	Nitrogen	ADF	NDF	Sugar	cond. Tannins	Poly-phenoles	Lipids	Ash	Alkaloid Dragen-dorff	Alkaloid Mayer	Alkaloid Wagner
<i>Acacia macrostachya</i>	Fabaceae (Mimosoidae)	seeds	4.76	16.67	25.67	3.56	0.12	0.45	4.30	2.94	pos	pos	pos
<i>Acacia seyal</i>	Fabaceae (Mimosoidae)	fruits pods; including seeds	2.36	22.66	32.78	7.59	0.44	6.32	0.59	4.01			
<i>Acacia spec.</i>	Fabaceae (Mimosoidae)	bark	1.19	39.57	52.32	9.32	2.73	3.27	0.83	5.24	neg	neg	neg
<i>Acacia spec.</i>	Fabaceae (Mimosoidae)	fruits	2.21	24.53	41.71	13.60	2.44	4.35	1.31	4.52	neg	neg	neg
<i>Afzelia africana</i>	Fabaceae (Caesalpinioideae)	seeds	2.90	19.36	43.99	6.24	0.14	0.38	14.63	2.08	pos	neg	pos
<i>Anogeissus leiocarpus</i>	Combretaceae	fruits	0.71	38.92	64.54	5.95	0.20	3.35	0.00	1.96	neg	neg	neg
<i>Aphania senegalensis</i> (<i>Lepisanthes senegalensis</i>)	Sapindaceae	fruits including seeds	1.15	25.58	43.51	12.07	0.00	0.24	2.87	3.04			
<i>Bombax costatum</i>	Malvaceae (Bombacaceae)	seeds	3.84	29.69	47.41	2.41	0.19	0.28	6.97	4.03	pos	pos	pos
<i>Borassus akeassii</i>	Arecaceae	fiber from stem	0.40	56.08	72.31	0.46	0.00	0.16	0.00	12.74	neg	neg	neg
<i>Borassus akeassii</i>	Arecaceae	fruit fiber	0.48	13.92	21.48	74.35	0.00	0.12	1.37	1.86	pos	neg	neg
<i>Borassus akeassii</i>	Arecaceae	fiber from leave	0.52	67.44	85.80	0.48	0.00	0.23	0.65	4.40	neg	neg	neg
<i>Borassus akeassii</i>	Arecaceae	fruitflesh from nut hart	0.72	54.58	75.55	5.87	0.00	0.05	0.54	0.37	neg	neg	neg
<i>Borassus akeassii</i>	Arecaceae	fiber from stem	0.84	41.70	85.10	0.74	0.00	0.24	0.87	9.72	neg	neg	neg
<i>Borassus akeassii</i>	Arecaceae	fruit	0.87	13.92	35.73	48.63	0.00	0.15	1.09	2.89			
<i>Borassus akeassii</i>	Arecaceae	young leaves	0.98	48.68	77.74	4.28	0.00	0.25	1.37	3.19	neg	neg	neg
<i>Capparis tomentosa</i>	Capparaceae	fruits	2.93	20.45	40.37	5.83	0.15	0.45	4.85	5.13	pos	pos	pos
<i>Cassia sieberiana</i>	Fabaceae (Caesalpinioideae)	seeds	2.30	10.46	38.59	9.31	0.97	0.93	0.62	3.47	pos	pos	pos
<i>Celtis integrifolia</i>	Cannabaceae	fruits	2.14	21.45	46.08	2.93	0.98	0.60	1.88	24.72			
<i>Cissus populnea</i>	Vitaceae	fruits	1.34	30.40	52.50	6.69	0.39	0.40	12.89	9.33	neg	neg	neg
<i>Combretum glutinosum</i>	Combretaceae	fruits samara; including seeds	1.98	27.35	42.08	9.04	0.00	6.38	14.73	3.14	pos	neg	neg
<i>Combretum micranthum</i>	Combretaceae	fruits	1.67	33.12	48.90	10.93	2.99	3.95	3.57	3.41			
<i>Combretum nigricans</i>	Combretaceae	fruits samara; including seeds	1.18	40.15	56.38	6.00	1.24	3.21	0.63	3.02	pos	neg	neg
<i>Cordyla pinnata</i>	Fabaceae (Caesalpinioideae)	fruits without seeds	1.08	7.29	12.99	25.51	0.56	1.50	1.37	3.23	neg	neg	neg
<i>Cordyla pinnata</i>	Fabaceae (Caesalpinioideae)	seeds	1.99	2.78	25.37	16.68	0.00	0.09	1.16	2.69			
<i>Cordyla pinnata</i>	Fabaceae (Caesalpinioideae)	flowers	2.08	11.70	19.97	26.04	0.84	1.44	1.92	4.64	neg	neg	neg
<i>Crossopteryx febrifuga</i>	Rubiaceae	seeds	1.00	68.31	77.58	1.62	0.12	0.60	0.00	2.46	neg	neg	neg
<i>Detarium microcarpum</i>	Fabaceae (Caesalpinioideae)	fruits including seeds	0.61	40.69	59.01	6.12	1.22	2.46	2.07	1.55	neg	neg	neg

<i>Dichrostachys cinerea</i>	Fabaceae (Mimosoidae)	fruits pods; including seeds	1.87	22.38	35.93	15.82	3.30	5.21	0.00	5.64	neg	neg	neg
<i>Diospyros mespiliformis</i>	Ebenaceae	fruits including seeds	0.69	38.73	56.69	9.49	0.79	2.29	1.81	2.90			
<i>Dombeya quinqueseta</i>	Malvaceae (Sterculiaceae)	flowers	1.75	23.35	38.92	15.54	2.05	2.97	1.29	6.37	pos	neg	neg
<i>Ficus ingens</i>	Moraceae	ripe fruits	0.66	34.97	47.57	11.50	1.18	1.61	2.99	5.93	neg	neg	neg
<i>Ficus ingens</i>	Moraceae	unripe fruits	0.67	32.05	47.61	8.47	0.94	0.73	3.22	6.48	neg	neg	neg
<i>Ficus iteophylla (thonningii)</i>	Moraceae	fruits including seeds	0.80	32.31	45.78	8.18	1.28	2.04	2.56	7.46			
<i>Grewia lasiodiscus</i>	Tiliaceae	seeds	0.61	59.22	78.47	3.45	0.00	0.21	0.89	3.21	neg	neg	neg
<i>Grewia lasiodiscus</i>	Tiliaceae	fruits including seeds	0.86	33.53	45.93	6.99	0.97	1.26	4.13	8.18	neg	neg	neg
<i>Grewia spec.</i>	Tiliaceae	fruits	0.93	44.78	61.40	5.01	0.90	1.32	1.41	5.01			
herb			0.26	48.99	73.84	12.31	0.00	0.20	0.62	3.48	neg	neg	neg
herb			0.81	41.84	69.42	1.83	0.00	0.63	2.04	12.49	neg	neg	neg
herb			1.16	46.06	74.54	0.87	0.00	0.15	1.90	8.80	neg	neg	neg
herb			1.25	35.86	62.07	2.46	0.00	0.61	3.19	9.50	neg	neg	neg
herb			1.26	33.09	57.33	1.27	0.00	0.30	2.96	11.54	neg	neg	neg
herb			1.39	35.70	67.56	2.93	0.00	0.66	1.01	6.13	neg	neg	neg
herb			1.71	30.48	65.16	2.14	0.00	0.76	1.28	11.03	neg	neg	neg
herb			1.75	30.09	62.73	5.94	0.00	0.62	1.29	12.50	neg	neg	neg
herb			2.05	38.98	69.74	2.60	0.00	0.26	1.71	8.58	neg	neg	neg
herb			2.05	30.63	70.52	4.72	0.00	0.69	2.12	4.31	neg	neg	neg
herb		fruits pods	2.16	35.81	56.02	5.31	0.53	0.80	0.42	3.49	neg	neg	neg
herb	Laminaceae, big leaves		2.52	35.86	48.77	2.73	0.00	2.35	3.41	10.13	neg	neg	neg
herb	Laminaceae, small leaves		2.98	32.82	44.32	3.06	0.00	2.52	3.75	8.65	neg	neg	neg
herb			3.27	15.68	43.08	4.87	0.24	0.87	3.33	12.85	neg	neg	neg
<i>Hexalobus monopetalus</i>	Annonaceae	ripe fruits	0.99	28.63	43.45	25.14	0.49	0.40	6.07	3.77	neg	neg	neg
<i>Hexalobus monopetalus</i>	Annonaceae	unripe fruits	1.44	47.58	63.74	4.01	0.74	0.59	6.22	3.06	neg	neg	neg
<i>Hexalobus monopetalus</i>	Annonaceae	leaves	2.08	25.26	45.79	10.29	2.60	2.89	2.57	7.26	neg	neg	neg
<i>Hexalobus monopetalus</i>	Annonaceae	flowers	2.49	20.48	30.75	11.71	1.29	2.56	2.65	4.67			
<i>Lanea microcarpa</i>	Anacardiaceae	fruits including seeds	1.57	29.78	45.74	3.88	0.28	1.55	4.46	4.84			
<i>Lanea velutina</i>	Anacardiaceae	fruits including seeds	1.43	27.02	39.37	4.39	0.59	2.62	1.62	3.20	neg	neg	neg
<i>Lonchocarpus laxiflorus</i>	Fabaceae (Papilionoideae)	seeds	4.83	13.83	21.61	10.13	0.26	0.77	15.36	3.36	pos	pos	pos
<i>Maytenus senegalensis</i>	Celastraceae	fruits including seeds	1.24	18.27	36.07	7.01	1.64	2.49	23.14	4.67	pos	neg	neg
<i>Mimosa pigra</i>	Fabaceae (Mimosoidae)	fruits pods; including seeds	1.60	33.02	50.27	4.58	0.72	2.45	0.56	3.57	pos	neg	neg
<i>Mimosa pigra</i>	Fabaceae (Mimosoidae)	fruits pods; including seeds	1.71	38.00	49.32	2.44	0.80	1.92	0.61	4.31	neg	neg	neg
parasite			1.82	21.05	27.91	6.73	1.84	7.74	0.85	4.36	neg	neg	neg
<i>Parkia biglobosa</i>	Fabaceae (Mimosoidae)	fruit shell	1.42	21.73	30.87	18.16	5.46	7.68	0.19	3.39	neg	neg	neg
<i>Parkia biglobosa</i>	Fabaceae (Mimosoidae)	flowers	2.00	16.84	26.39	19.81	1.07	3.30	0.80	4.64	pos	neg	neg
<i>Parkia biglobosa</i>	Fabaceae (Mimosoidae)	seeds	3.03	12.84	20.95	7.85	1.34	3.58	1.66	4.01			
<i>Piliostigma reticulatum</i>	Fabaceae (Caesalpinioideae)	seeds	3.55	15.30	36.38	7.60	1.32	1.81	1.57	2.46	neg	neg	neg
<i>Piliostigma spec.</i>	Fabaceae (Caesalpinioideae)	old pods	0.32	53.97	65.84	0.13	0.00	0.21	0.51	2.22	neg	neg	neg

<i>Piliostigma thonningii</i>	Fabaceae (Caesalpinioideae)	seeds	3.42	13.15	33.45	9.43	1.51	1.58	1.04	2.72	neg	neg	neg
<i>Pterocarpus erinaceus</i>	Fabaceae (Papilionoideae)	bark	1.72	21.17	34.45	10.88	2.63	3.03	0.19	5.39	neg	neg	neg
<i>Pterocarpus erinaceus</i>	Fabaceae (Papilionoideae)	seeds	5.60	15.42	23.59	9.97	0.20	1.66	15.83	3.60	pos	pos	pos
<i>Pterocarpus lucens</i>	Fabaceae (Papilionoideae)	fruits pods including seeds	1.29	44.23	59.36	4.35	0.59	0.76	0.20	3.99	neg	neg	neg
<i>Pterocarpus santaloides</i>	Fabaceae (Papilionoideae)	fruits including seeds	2.27	26.21	47.65	7.31	1.29	1.47	2.86	2.93	pos	neg	pos
<i>Saba senegalensis</i>	Apocynaceae	seeds	1.02	34.19	55.06	7.30	0.00	0.18	4.46	2.94	neg	neg	neg
<i>Sarcocephalus latifolius</i>	Rubiaceae	fruit	1.02	33.79	42.04	5.81	1.21	1.68	4.68	5.57			
<i>Sarcocephalus latifolius</i>	Rubiaceae	flowers	1.83	17.11	26.05	5.52	0.12	1.70	1.33	6.82	neg	neg	neg
<i>Sclerocarya birrea</i>	Anacardiaceae	fruits including seeds	0.80	37.82	46.78	15.15	0.29	0.50	7.32	3.45	neg	neg	neg
<i>Sclerocarya birrea</i>	Anacardiaceae	seeds	0.91	48.19	63.94	5.60	0.00	0.27	4.11	0.79	pos	pos	pos
<i>Senna siamea</i>	Fabaceae (Caesalpinioideae)	seeds	3.38	14.55	34.94	5.76	0.00	0.13	3.77	4.24	pos	pos	pos
<i>Spondias mombin</i>	Anacardiaceae	fruits	0.74	45.04	53.52	7.52	0.12	0.51	2.43	3.65	neg	neg	neg
<i>Strychnos spinosa</i>	Loganiaceae	fruits shell	0.32	42.24	62.43	27.70	0.00	0.38	0.40	0.81	neg	neg	neg
<i>Strychnos spinosa</i>	Loganiaceae	fruits	0.94	32.00	44.61	16.18	0.00	0.75	1.31	3.08	neg	neg	neg
<i>Tamarindus indica</i>	Fabaceae (Caesalpinioideae)	shell	0.59	45.63	62.65	6.49	0.99	1.26	0.89	1.62	neg	neg	neg
<i>Tamarindus indica</i>	Fabaceae (Caesalpinioideae)	shell content including seeds	1.52	14.10	21.73	13.18	1.65	1.53	1.39	2.35	neg	neg	neg
<i>Terminalia avicennioides</i>	Combretaceae	flowers	1.00	27.86	37.08	10.02	0.42	5.84	1.24	4.12	neg	neg	neg
<i>Terminalia macroptera</i>	Combretaceae	seeds	0.72	51.90	68.26	3.07	0.00	1.95	1.21	1.46	neg	neg	neg
<i>Terminalia macroptera</i>	Combretaceae	flowers	1.51	16.59	23.33	12.33	0.90	4.06	3.15	7.34	pos	neg	neg
<i>Vitex madiensis</i>	Lamiaceae (Verbenaceae)	fruits	0.65	44.13	54.24	7.43	0.36	2.75	1.59	2.87	neg	neg	neg
Yams	Dioscoraceae		0.51	30.80	36.08	45.59	0.00	0.13	0.28	13.60	neg	neg	neg
<i>Ziziphus mauritiana</i>	Rhamnaceae	fruits including seeds	0.63	33.88	50.44	22.62	0.69	0.83	2.41	3.46	neg	neg	neg
<i>Ziziphus mucronata</i>	Rhamnaceae	fruits including seeds	0.85	36.84	50.92	22.55	1.38	1.68	1.59	2.84	neg	neg	neg
<i>Ziziphus spec.</i>	Rhamnaceae	fruits	1.78	31.77	50.66	5.38	0.59	1.54	0.86	#NULL!	neg	neg	neg
unidentified		fruits without shell	2.10	15.17	20.32	27.43	0.00	0.15	5.94	3.34	pos	pos	pos